

Perle Bleue Perle Bleue



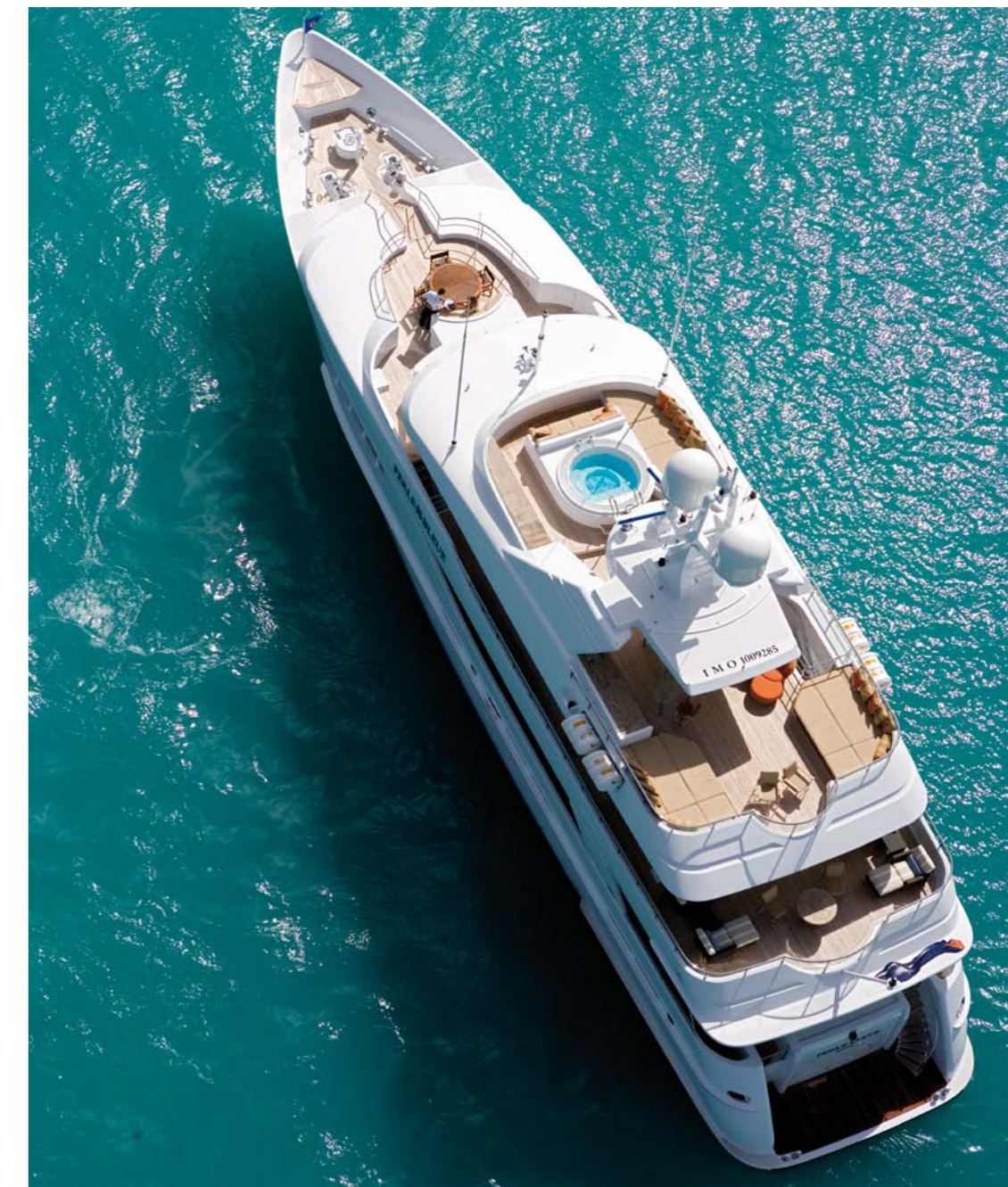
Hakvoort



PERLE BLEUE

Perle Bleue is a prime example of what can be achieved when Hakvoort's technical and construction expertise is synthesised with the creative ideas of an experienced owner. With Donald Starkey (design) and Diana Yacht Design (naval architecture) also on the team, this 38-metre contemporary motoryacht is truly special. Compact and sleek, Perle Bleue features a wealth of open spaces and has an impressive range of 5750 at 9 knots.

The streamlined size of the yacht combines medium powered engines with higher fuel efficiency and a cruising speed of 11.5 knots. Perle Bleue is fitted with the very latest equipment available, including a superior monitoring system. Low maintenance is the rule both on deck and in the engine room, where a sophisticated design allows for optimum technical accessibility.



Main Deck

Hakvoort



Bridge Deck

Hakvoort

Inspired by 1930s French salons, Perle Bleue's main lounge is finished in a French modern style. The mahogany rosewood walls are enhanced by a burnished gold ceiling, while the floor is covered with carpet and leather tiles. The lobby features carpeted stairways leading up to the upper saloon and down to the guest quarters. A service hallway

to port can be separated from the guest hallway by means of a sliding door for enhanced privacy. The refined upper salon is Perle Bleue's pièce de résistance and includes a surround sound theatre with a giant 64" screen. The yacht's wheelhouse with two comfortable seats is finished in blond teak and leather walls with floors of teak and holly veneer.



Accommodations

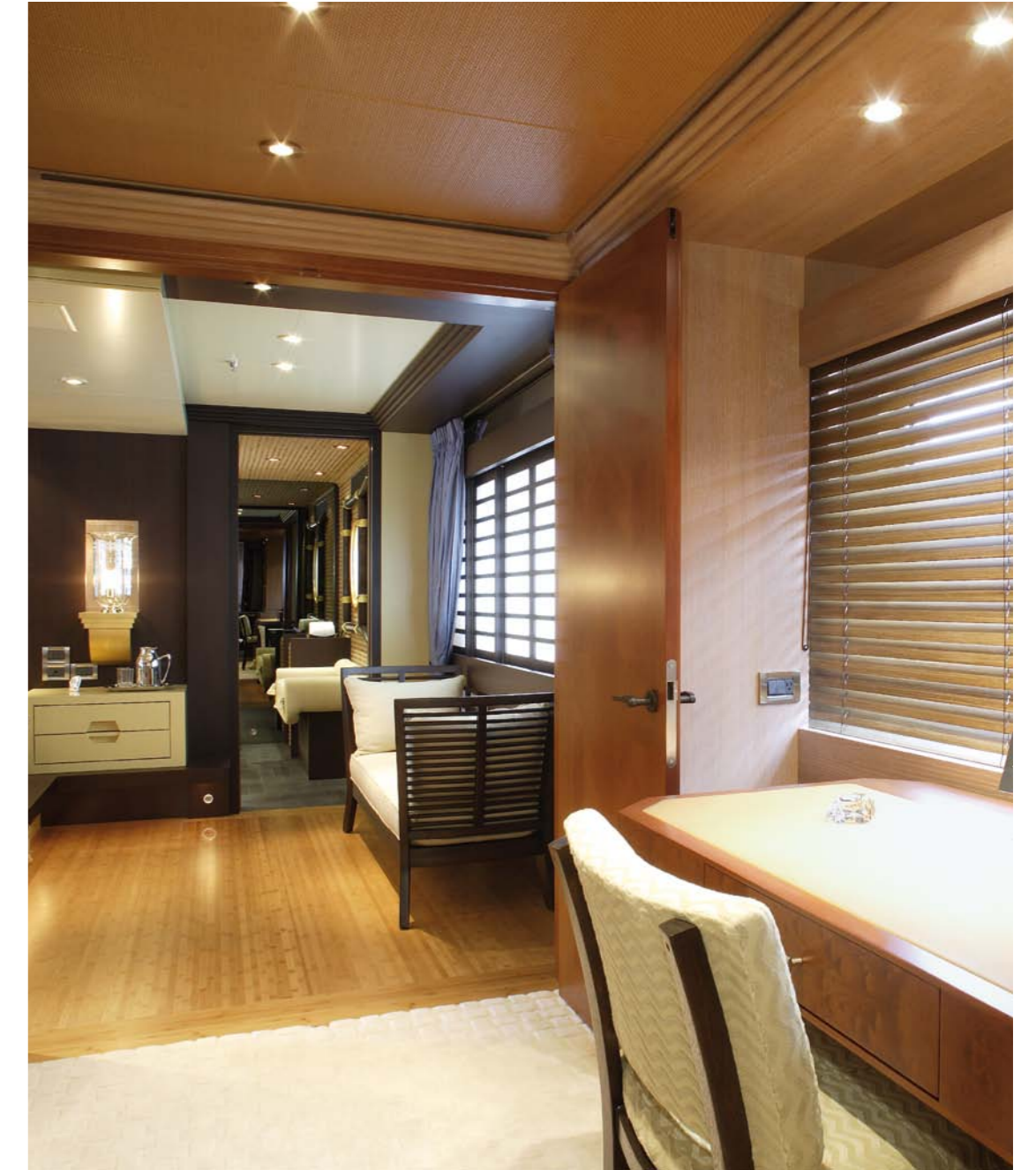
Hakvoort

Hakvoort



The full-beam master stateroom is a continuation of the overall theme of the yacht, with a more oriental approach adding an individual feel. The large master bathroom is finished in Jerusalem stone with elegant riven slate tiles. The separate owner's study features a large desk and plenty of locker space, including bookshelves. Perle Bleue provides comfortable berths for a captain and six crew members.

Designed in a St Barth's style with teak floors and individual pastel colour themes, Perle Bleue's three guest staterooms accommodate up to eight guests in splendid style. The bathrooms have unique colour schemes, each finished with a different type of marble. A sliding shutter wall covers the exterior side of each stateroom, facilitating an island atmosphere.



Outdoor Facilities

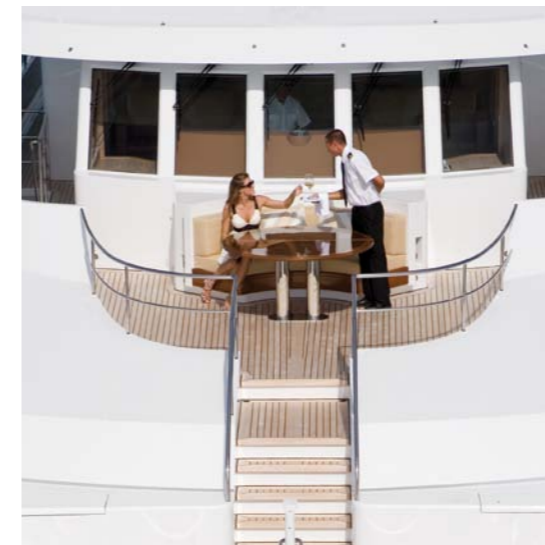
Hakvoort

Hakvoort



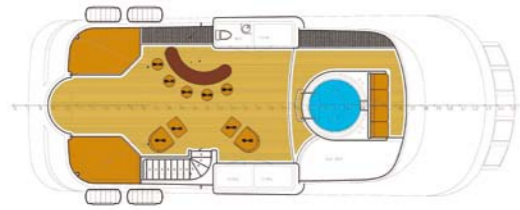
Perle Bleue's spacious sun deck provides an exhilarating array of lounging spaces. One of the romantic features is the bench seat in front of the whirlpool on the sundeck, which provides delightful views of the bow slicing through the waves or entering port. Another original area on Perle Bleue is the space in front of the wheelhouse, which consists of a dining table for six and an impressive all-teak patio zone. The sky lounge opens seamlessly onto the huge aft deck to

create a single combined indoor/outdoor space, providing dining accommodation for up to 12 people. A seating area for six people aft of the dining table on the bridge deck serves as the ideal sundowner spot. Perle Bleue's modern appearance is enhanced by a number of glass bulwarks on the bridge and sundecks. The outdoor aft spaces on both the main and bridge deck are kept warm by thermostatically controlled radiant heaters.

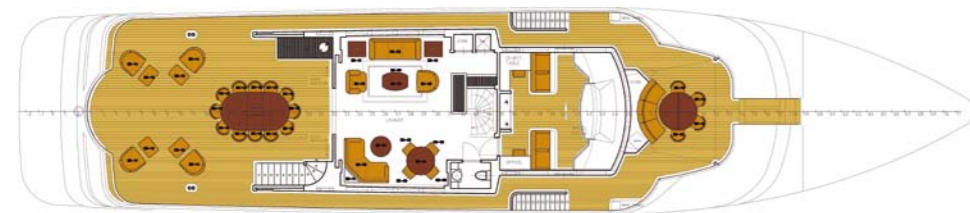


Specifications

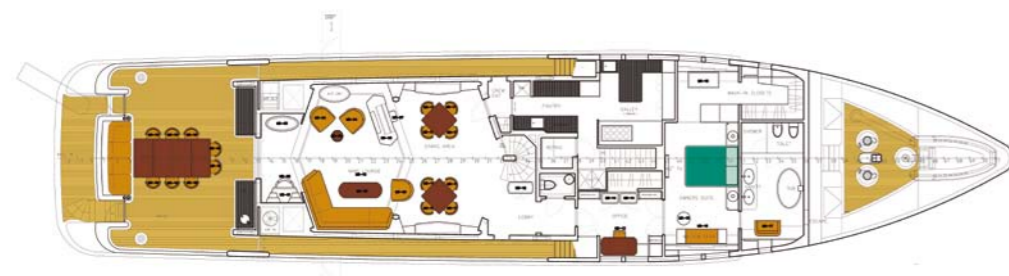
Hakvoort



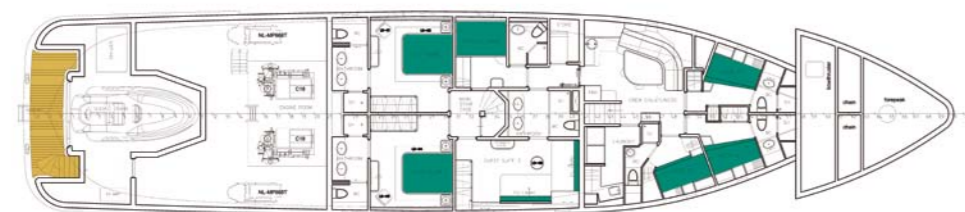
Sun Deck



Bridge Deck



Main Deck



Lower Deck

Specifications *Perle Bleue*

LOA	38 m / 124'8 ft
LWL	33 m / 108'3 ft
Beam (max)	8.30 m / 27'2 ft
Draught full load	2.3 m / 7'5 ft
Main Engines	2 x Caterpillar C18, 441 kW at 1800 rpm
Gearbox	Reintjes WAF264L
Generators	Kilopak KP 99/60Hz
Speed	Cruise 11.5 knots / Max. 13 knots
Range	3,500 nm at averaging 11,5 knots 5,750 nm at averaging 9 knots
Fuel Capacity	46,600 litres / 12,600 U.S. gallons
Fresh Water	10,000 litres / 2,642 U.S. gallons
Construction	Hull: Grade A Steel Superstructure: Aluminium
Classification	Lloyd's +100A1 SSC Yacht Mono + LMC MCA UMS
Naval Architect	Diana Yacht Design
Exterior Design	Don Starkey Designs
Interior Design	Don Starkey Designs
Stabilizers	Quantum QC 1200 zero speed
Watermakers	Maxtrix Silver A, reverse osmosis, each unit 1500 gallons a day
Bow thrusters	Hydromar, 70 kW
Steering	Hydromar
Control/monitoring	Dekasis Ships Alarm System
Fire control	Seafix- Co2/ SEMCO high pressure mist system
Entertainment	Kaleidescape, Runco and B&O

Communications	High speed satellite data, including wireless network for email. UHF call forwarding allows calls to be received anywhere.
Outdoor climate	Sun shades with removable canvas attached to A mast and mist system keep half the sundeck cool. Thermost controlled radiant heaters on main and bridge deck aft, which are semi-enclosed by glass
Toys	Castoldi 16 / jet skis complete scuba diving equipment

Perle Bleue was commissioned by a repeat customer, the former owner of the 46-metre *Campbell Bay* (2006). This highly experienced client set us the challenge to create an eight-metre smaller yacht with equal or better performance and no reduction in deck space. The fact that Perle Bleue won the Showboats award for best displacement motoryacht and was a finalist for the Boat International World recognises the achievements of all involved in this project.

Like most Hakvoort yachts, *Perle Bleue* is designed and built to Lloyd's Classification (including an unmanned engine room certificate) and MCA requirements.

The Shipyard

Hakvoort



With a shipbuilding tradition beginning in the eighteenth century, Hakvoort Shipyard has built nearly thirty luxury yachts over the past two decades. Starting with a series of aluminium Striker sportfishermen and the yacht *Tonga*, Hakvoort has grown in recognition among the world's most knowledgeable clients, naval architects, and designers.

The superb quality of Hakvoort yachts is also recognized by the International Superyacht Society and Showboats International. Yachts like *Lady Marina* (1994), *Freesia* (1998), *Spada* (1999), *Saga* (2002) and *Tigre D'Or* (2005) have been nominated for a reward by them and won in their class.

Located in the classic Dutch town of Monnickendam, Hakvoort's facilities have expanded to meet market demand, and it now builds yachts up to 50 metres, with all wood joinery requirements created by its own fine furniture shop, Unlimited Interiors.

< Hakvoort Shipyard, Monnickendam

Hakvoort

FINE YACHTS • SINCE 1919

HAKVOORT SHIPYARD, HAVENSTRAAT 22, 1141 AX MONNICKENDAM, THE NETHERLANDS, PHONE +31 (0)299 651403, FAX +31 (0)299 651041, WWW.HAKVOORT.COM, SALES@HAKVOORT.COM